



TÜBİTAK  
BİLGEM

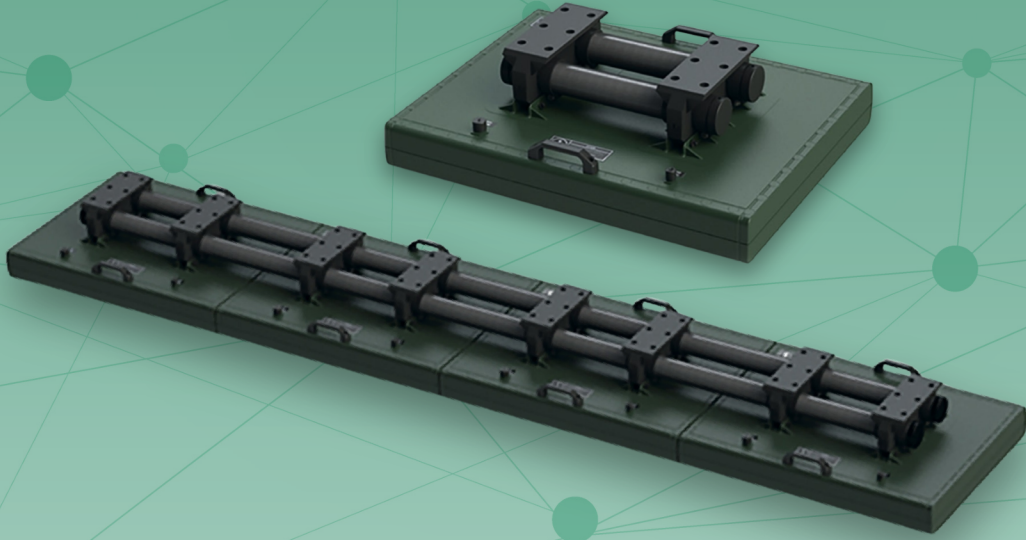


# ÖNDER®

## VEHICLE MOUNTED MINE DETECTOR MULTICHANNEL EMI & GPR TECHNOLOGY

A new generation mine/IED detection system, which can be easily mounted on many manned/unmanned ground vehicles and low-flying UAVs.

- Modular structure with different width options: 80cm-160cm-240cm-320cm-400cm
- Mine and IED detection up to 15 km/h
- Life safety with remote control
- Compatible with MIL-STD-810G, MIL-STD-461F, MIL-STD-464



ÖNDER®

NEXT-GENERATION MINE DETECTION SYSTEM  
FOR MANNED AND UNMANNED VEHICLES

# ÖNDER®

## VEHICLE MOUNTED MINE DETECTOR MULTICHANNEL EMI & GPR TECHNOLOGY

### TECHNICAL SPECIFICATIONS

Sensor Type	Multi-channel EMI Technology (Metal Detector) Multi-channel GPR Technology (Ground Penetrating Radar)
Weight	Panel Weight: ~13.5 kg Total Weight (mounting parts included) : ~21 kg
Dimensions (W x L x H)	~805 mm X 615mm X 229 mm
Material	Polycarbonate (Panel), Fiberglass & POM (Mounting Parts)
Usage	Remote controller or Android Tablet
Power Requirement	28 VDC, 18 W (max)
Scanning Speed (A/P Mine/IEDs)	up to 10 km/h
Scanning Speed (A/T Mines/IEDs)	~15 km/h
Scan Mode	Normal, Mineral
Alarm Type	Visual, Audible
Operating Temperature	-30°C to 50°C
Compatibility	MIL-STD-810G, MIL-STD-461F, MIL-STD-464

### INTEGRATION

Optional Panel Width	80 cm to 400 cm
Armoured Vehicle	✓
Unmanned Ground Vehicle	✓
Unmanned Aerial Vehicle	✓

### OPERATIONAL ACCESSORIES

Carry/Storage Bag	Wooden Crate (Shipping Bag)
-------------------	-----------------------------

### SCREEN

