



TÜBİTAK  
BİLGEM



# OCİT-S

STATIONARY OPTICAL SCOPE DETECTION SYSTEM



# OCİT-S

## STATIONARY OPTICAL SCOPE DETECTION SYSTEM

The Optical Scope Detection System **actively illuminates** areas of potential threats using an **infrared laser** and detects threats by analyzing **retro-reflective returns** from optical sighting systems. The system is capable of identifying the presence of a threat, determining its location, and alerting the operator. The stationary system is powered by the **electrical grid** and can **operate continuously** without interruptions.

The system integrates advanced **image processing and artificial intelligence algorithms** to support **ISR (Intelligence, Surveillance, Reconnaissance)** missions, achieving **over 95% detection accuracy** while minimizing false alarm rates and enhancing operational reliability. Supports **both autonomous and operator-controlled scanning modes for wide-area surveillance**, enabling rapid adaptation to diverse mission profiles.



Laser Illuminator	
Wavelength	Infrared
Optical Power	> 100 W
Beam Divergence	< 5 mrad
Imaging	
Camera	NIR, Monochrome, 1,3 Mpixel
Zoom	40x, f=1000mm, 0,4° (H)
Laser Range Finder	
Max Range	32 km
Pan-Tilt	
Pan Angle	nx360°
Tilt Angle	-20° / +20°
Electrical	
Power Source	Grid (220 VAC)
Consumption	< 1200W
Physical Dimensions & Weight	
Payload	42 cm x 60 cm x 49 cm 32 kg
Total (Except Cables)	49 kg
Performance	
Night Vision	1500 m
Binoculars (7x50)	2500 m
Sniper Scope (3-12x50)	14000 m
ATGM Type-1	3000 m
ATGM Type-2	6000 m
ATGM Type-3	5500 m
Environmental Tests	
Compatible with MIL-STD-810G and MIL-STD-461G	

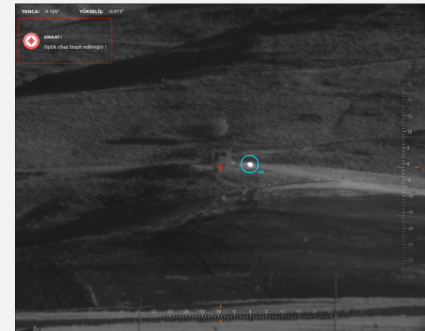
ATGM Type-2 @ 6000 m



A sniper scope positioned inside a vehicle, behind glass @ 5500 m



Sniper Scope @ 14000 m



OCİT-S EN-20260414



**BİLGEM**  
NATIONAL RESEARCH INSTITUTE OF  
ELECTRONICS AND CRYPTOLOGY

T: +90 262 648 1000 • F: +90 262 648 1100 • E: bilgem@tubitak.gov.tr  
W: bilgem.tubitak.gov.tr • A: PK: 74, 41470, Gebze, Kocaeli TÜRKİYE